

# **LASERLIGHT3**

COLOR REMOTE DISPLAY AND  
LARGE-DISPLAY WEIGHT INDICATOR



**RICE LAKE®**  
WEIGHING SYSTEMS

800-472-6703  
[www.ricelake.com](http://www.ricelake.com)



## Custom Messaging and Vivid Display

Clearly display weight, symbols and messages with the LaserLight3 remote display. The vibrant LED display has adjustable intensity and a non-glare lens so its 4- or 5-inch-tall messages are always easy to read.

The full-color display offers versatile layout choices such as mirror mode, 1-line, 2-line, 4-line and quadrant formats. LaserLight3 color commands allow operators to change background and foreground text with scrolling, sliding or flashing messaging options.

## Withstands the Elements

LaserLight3 has a durable IP66-rated enclosure with a Gore-Tex® breather vent to inhibit moisture, protecting internal electronics. The integrated weatherproof keypad allows operators to send configurable scale commands to the system indicator. An optional sun visor can improve visibility in bright, outdoor applications.



\* Optional sun visor shown on Large-Display Weight Indicator model

## Versatile System Integration

Auto Learn logic enables LaserLight3 to quickly communicate with a wide range of indicators, providing greater application flexibility. LaserLight3 has multiple communication options, including RS-232, RS-422, 20 mA and Ethernet TCP/IP. Mounting options for LaserLight3 include VESA, flange and pole configurations.

### STANDARD FEATURES

- Vibrant 128- by 32-pixel LED color display with nonglare lens; high-intensity digits up to 5 inches tall
- Color commands change background and foreground text
- Auto Learn mode enables compatibility with a wide range of indicators
- Versatile layout choices include mirror mode, 1-line, 2-line, 4-line and quadrant format
- Dynamic messaging views can scroll, slide or flash
- Display stop/go light symbols/arrows with digits up to 4 inches tall
- Software selectable time/date when weight is at zero
- Integrated six-button keypad for scale operations
- Durable enclosure with Gore-Tex® breather vent to inhibit internal moisture
- RS-232, RS-422, 20 mA and Ethernet TCP/IP
- Mounting options include VESA, flange and pole configurations

### SPECIFICATIONS

<b>POWER CONSUMPTION:</b>	AC voltages: 100 to 240VAC; 50/60Hz 120 watt (120 VAC)
<b>OUTPUT INTERFACE:</b>	Ethernet TCP/IP, Independently configurable echo port
<b>INPUT DATA FORMAT:</b>	7 or 8 data bits; even, odd or no parity; 1 or 2 stop bits Baud Rate: 1200, 2400, 4800, 9600, 19200, 38400, 57600 and 115200 self-learning or configurable
<b>UPDATE:</b>	Continuous or out-of-motion modes Message interrupt mode
<b>DIGITAL I/O:</b>	Four configurable I/O 5V logic
<b>COMMUNICATION PORTS:</b>	Ethernet TCP/IP, RS-232, RS-485, 20 mA (passive)
<b>OPTIONAL :</b>	ConnexLink™ wireless radio WLAN interface 802.11 a/b/g/n
<b>CHARACTER FORMAT:</b>	Selectable foreground/background color 7-color: red, blue, green, yellow, magenta, cyan, white
<b>MAXIMUM VIEWING DISTANCE:</b>	4-inch character: 100 ft (30 m) 5-inch character: 150 ft (46 m)
<b>VIEWING ANGLE:</b>	160°
<b>DISPLAY:</b>	Bright, outdoor color LED lamps 128 × 32-pixel, 4 mm pitch Decimal or comma indication Weight display with units and mode
<b>KEYS/BUTTONS:</b>	Integrated keypad with configurable scale commands Zero, Gross/Net, Tare, Units, Print, Menu
<b>TIME:</b>	Software enable, 12- or 24-hour format
<b>DATE:</b>	Software enable, US or ISO format
<b>DIMENSIONS:</b>	(L x W x H) 25.0 × 10 × 6 in
<b>TEMPERATURE RANGE:</b>	Operating -40 °F to 120 °F (-40 °C to 49 °C)
<b>RATING/MATERIAL:</b>	IP-66 Mild steel, powder-coated solar reflective paint
<b>WEIGHT:</b>	Without wall mount: 7.81 kg 14.19 lbs With wall mount: 10.66 kg 20.48 lbs With sunshade: 14.88 kg 29.79 lbs
<b>WARRANTY:</b>	Two-year limited



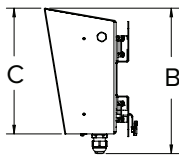
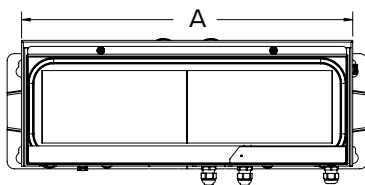
### Approvals



Measurement  
Canada  
Approved

### Dimensions

LaserLight3			
A	23.00 in (584 mm)	E	5.00 in (127 mm)
B	10.10 in (256 mm)	F	8.00 in (203 mm)
C	8.73 in (222 mm)	G	25.02 in (636 mm)
D	5.87 in (149 mm)		

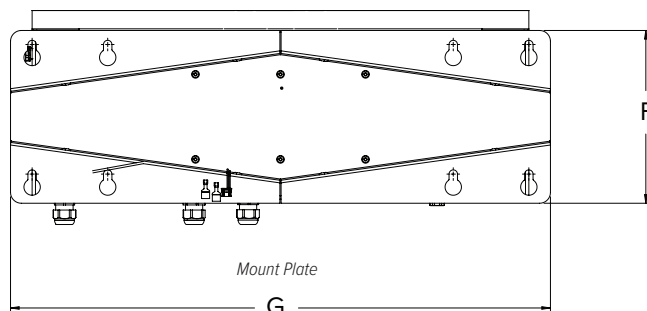
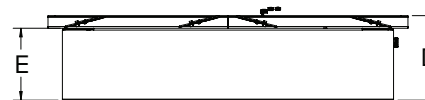


### Standard Features

- Color display
- Displays six high-intensity digits up to 5 in height
- Adjustable daylight/night intensity
- Mirror mode (reverse image) function
- Durable weather tight enclosure with flip-down door
- Flat-wall mounted or add VESA or offset mount

### Options

- Wireless LAN, Wi-Fi interface 802.11 a/b
- Wireless interface, pair of ConnexLink™ radios and mount
- Pole mount kit, VESA flat wall for 2 to 6 inch pole (W × H) 200 × 100 mm, 6 fasteners (M4 × 8 mm)
- Sunshade visor, 8-inch painted steel



### Specifications

#### Power:

AC voltages: 100 to 240 VAC; 50/60 Hz  
120 watt (120 VAC)

#### Output Interface:

Ethernet TCP/IP, independently configurable  
echo port

#### Input Data Format:

Baud rate: 1200, 2400, 4800, 9600, 19200, 38400,  
57600 and 115200 self-learning or configurable

#### Update:

Continuous or out-of-motion modes  
Message interrupt mode

#### Digital I/O:

Four I/O read or set  
5 V logic

#### Communication Ports:

Ethernet TCP/IP, RS-232, RS-485, 20 mA

#### Character Format:

7 or 8 data bits; even, odd, or no parity;  
1 or 2 stop bits

#### Maximum Viewing Distance:

4-inch character 100 ft (30 m)  
5-inch character: 150 ft (46 m)

#### Viewing Angle:

160°

#### Display:

Bright, outdoor color LED lamps  
128 × 32 pixel, 4 mm pitch  
Decimal or comma indication  
Weight display with units and mode  
Message display 1, 2 or 4 lines

#### Keys/Buttons:

Zero, Gross/Net, Tare, Units, Print, Menu

#### Time:

Software enable, 12 or 24 hour format

#### Date:

Software enable, US or ISO format

#### Temperature:

Operating:  
-40 °F to 120 °F (-40 °C to 49 °C)

#### Rating/Material:

IP66  
Mild steel, powder-coated

#### Weight:

20 lb (9 kg)

#### Warranty:

Two-year limited

#### Approvals:

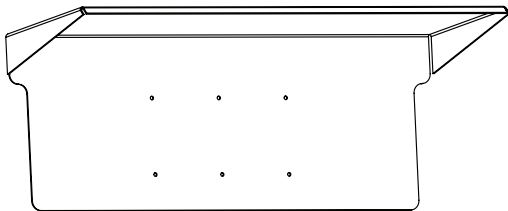
NTEP 22-096  
Measurement Canada AM-6210C

Part Number/Price

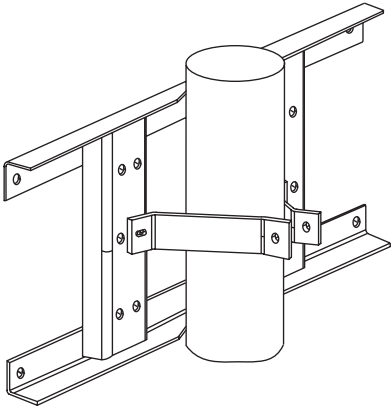
Part #	Description	Est. Weight	Price
205780	LaserLight3 large-display weight indicator	20 lb	Consult

Options/Accessories

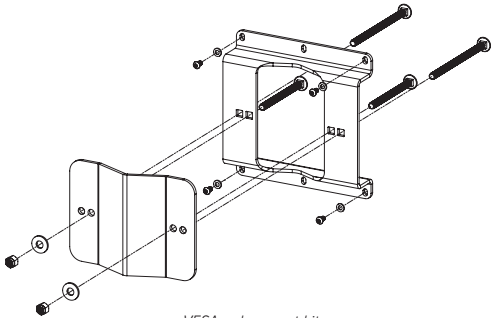
Part #	Description	Price
212745	Pole mount kit, VESA flat-wall, 200 mm W x 100 mm H, 6 fasteners (M4 x 8 mm) for 2-6 inch pole	Consult
75856	Pole mount kit, 4-in flange style (24-in wide frame use with 4-8 in dia. pole)	Consult
208807	Sunshade, 8-in	Consult
209118	Wireless LAN, RS-232/Wi-Fi interface 802.11 a/b XPico module	Consult
212753	Wireless interface, pair of ConnexLink radios transceiver kit and mount	Consult



Sunshade  
PN 208807



Flange pole mount kit  
PN 75856



VESA pole mount kit  
PN 212745