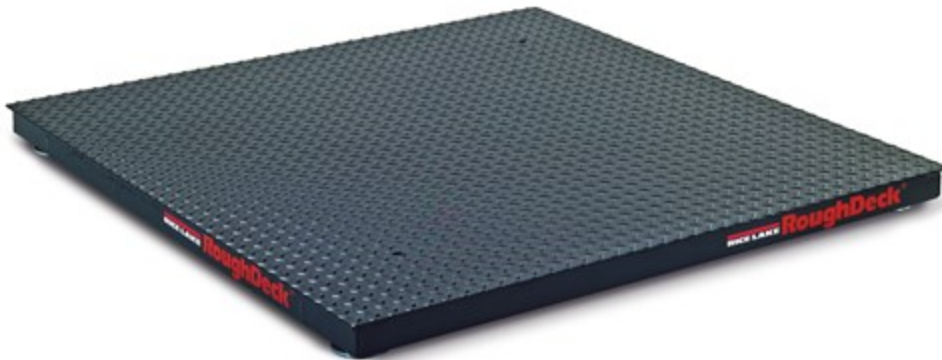


RoughDeck® HP Floor Scale



As of: Monday, February 17,
2025



Standard Features

- Heavy-duty industrial design
- Structural steel channel frame
- Four NTEP Certified alloy steel, shear beam load cells
- 20 ft SURVIVOR® EL147HE hostile environment load cell cable
- Side-access junction box
- Rugged diamond deck safety treadplate
- 4 adjustable stainless steel SUREFOOT™ support feet
- 4 corner overload stops (Canadian versions only)
- Level bubble (Canadian versions only)

Approvals



Measurement
Canada
Approved



WARNING:
Cancer
and
Reproductive
Harm
California
Proposition
65

The Toughest, Most Accurate Floor Scale Available

The RoughDeck HP's best-in-class features are enhanced to deliver more reliability and higher performance than ever before. Available in 1,000- to 10,000-pound capacities, the RoughDeck HP is the industry leader for precision weighing in Legal for Trade applications.

The RoughDeck HP's NEMA Type 4X aluminum TuffSeal® junction box is protected from forks and industrial abuse by a six-inch structural steel channel frame and diamond treadplate safety deck. The junction box is also mounted as a handy slide-out tray that eases setup and service access. Cables include sturdy cord grips or a quick disconnect for added convenience. In addition, all load cell cables are enclosed in conduit, alleviating the danger of rough handling. Load cells are recessed within the channel for protection on all sides while maintaining easy access for leveling.

All Rice Lake floor scales, unless specified otherwise, are built with lifting holes to assist our dealers during installation or at later service the scales.

RoughDeck HP Floor Scale Specifications

End Load Capacity:

200% full scale at 1,000 lb
100% full scale at 2,000 lb, and
5,000 lb
80% full scale at 10,000 lb

Cable Length:

20 ft (6.1 m) for connecting
junction box to indicator

Junction Box:

TuffSeal® JB4SS stainless steel,
NEMA Type 4X junction box with
signal trim card

Welding:

Stitch

Threaded Eyebolt:

Hole (1/2-20 NF) located in center
of deck for easy lifting

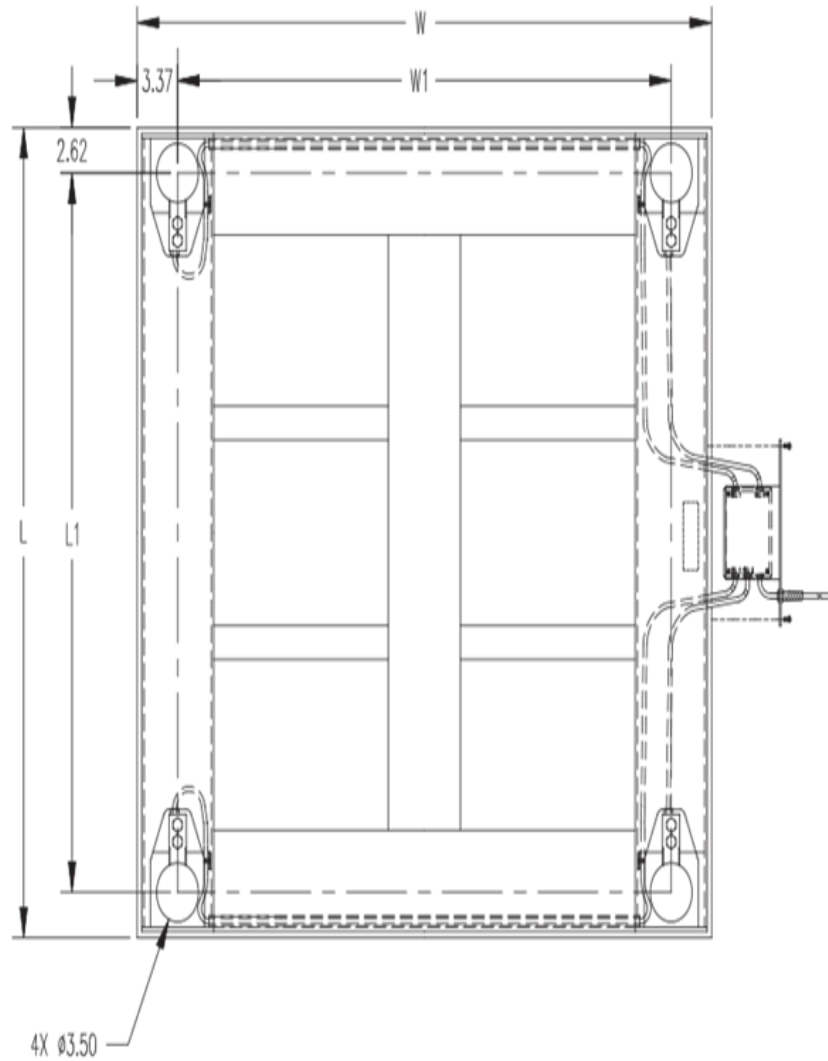
Warranty (limited):

Weldment: Five-year
Load cells: Two-year
All other components: One-year

Approvals:

NTEP CC 92-001, Class III 5,000d
Measurement Canada AM-4827,
Class III 5,000d

RoughDeck HP Floor Scale Dimensions



Dimensions				
Length	L1	W	W1	H
30.00 in	24.75 in	30.00 in	23.25 in	3.50 in
36.00 in	30.75 in	36.00 in	29.25 in	3.50 in
48.00 in	42.75 in	48.00 in	41.25 in	3.50 in
60.00 in	54.75 in	48.00 in	41.25 in	3.50 in
72.00 in	66.75 in	48.00 in	41.25 in	3.50 in
60.00 in	54.75 in	60.00 in	53.25 in	3.50 in
72.00 in	66.75 in	60.00 in	53.25 in	3.50 in
84.00	78.75 in	60.00 in	53.25 in	3.50 in

Note: 1 in = 25.4 mm

Parts

Part # Description

With Quick Connector

66318	Scale,Floor Roughdeck 2.5x2.5HP-2K 2-1/2ftx2-1/2x3-1/2 2000lb 20ft w/ Quick Connect NTEP III 5 Steel Painted
66320	Scale,Floor Roughdeck 3x3HP-1K 3ftx3ftx3-1/2 1000lb 20ft w/ Quick Connect NTEP III 5 Steel Painted
66317	Scale,Floor Roughdeck 3x3HP-2K 3ftx3ftx3-1/2 2000lb 20ft w/ Quick Connect NTEP III 5 Steel Painted
105300	Scale, Floor Roughdeck 3x3HP-5K 3ftx3ftx3-1/2 5000lb 20ft w/ Quick Connect NTEP III Steel Painted
66319	Scale,Floor Roughdeck 4x4HP-1K 4ftx4ftx3-1/2 1000lb 20ft w/ Quick Connect NTEP III 5 Steel Painted
67618	Scale,Floor Roughdeck 4x4HP-2K 4ft x 4ft x 3-1/2 2,000LB 20ft w/ Quick Connect NTEP III 5 Steel Painted
66316	Scale,Floor Roughdeck 4x4HP-5K 4ftx4ftx3-1/2 5,000lb 20ft w/ Quick Connect NTEP III 5 Steel Painted
66315	Scale,Floor Roughdeck 4x4HP-10K 4ftx4ftx3-1/2 10,000lb 20ft w/ Quick Connect NTEP III 5 Steel Painted
66314	Scale,Floor Roughdeck 4x5HP-5K 4ftx5ftx3-1/2 5,000lb 20ft w/ Quick Connect
66313	Scale,Floor Roughdeck 4x5HP-10K 4ftx5ftx3-1/2 10,000lb 20ft w/ Quick Connect NTEP III 5 Steel Painted
66312	Scale,Floor Roughdeck 4x6HP-5K 4ftx6ftx3-1/2 5,000lb 20ft w/ Quick Connect NTEP III 5 Steel Painted
66311	Scale,Floor Roughdeck 4x6HP-10K 4ftx6ftx3-1/2 10,000lb 20ft w/ Quick Connect NTEP III 5 Steel Painted
66310	Scale,Floor Roughdeck 5x5HP-5K 5ftx5ftx3-1/2 5,000lb 20ft w/ Quick Connect NTEP III 5 Steel Painted
66309	Scale,Floor Roughdeck 5x5HP-10K 5ftx5ftx3-1/2 10,000lb 20ft w/ Quick Connect NTEP III 5 Steel Painted
66308	Scale,Floor Roughdeck 5x6HP-5K 5ftx6ftx3-1/2 5,000lb 20ft w/ Quick Connect NTEP III 5 Steel Painted
66307	Scale,Floor Roughdeck 5x6HP-10K 5ftx6ftx3-1/2 10,000lb 20ft w/ Quick Connect NTEP III 5 Steel Painted
66306	Scale,Floor Roughdeck 5x7HP-5K 5ftx7ftx3-1/2 5000lb 20ft w/ Quick Connect NTEP III 5 Steel Painted
66305	Scale,Floor Roughdeck 5x7HP-10K 5ftx7ftx3-1/2 10,000lb 20ft w/ Quick Connect NTEP III 5 Steel Painted

Without Quick Connector

67695	Scale,Floor Roughdeck 2.5x2.5KHP-2K 2.5ftx2.5ftx3-1/2 2000lb w/o Quick Connect NTEP III 5 Steel Painted
67693	Scale,Floor Roughdeck 3x3HP-1K 3ftx3ftx3-1/2 1,000lb 20ft w/o Quick Connect NTEP III 5 Steel Painted.
67696	Scale,Floor Roughdeck 3x3HP-2K 3ftx3ftx3-1/2 2000lb 20ft w/o Quick Connect NTEP III 5 Steel Painted
67697	Scale,Floor Roughdeck 4x4HP-2K 4ftx4ftx3-1/2 2000lb 20ft w/o Quick Connect NTEP III 5 Steel Painted

Part #	Description
105301	Scale, Floor Roughdeck 3x3HP-5K 3ftx3ftx3-1/2 5000lb 20ft w/o Quick Connect NTEP III Steel Painted
67694	Scale, Floor Roughdeck 4x4HP-1K 4ftx4ftx3-1/2 1000lb 20ft w/o Quick Connect NTEP III 5 Steel Painted
67698	Scale, Floor Roughdeck 4x4HP-5K 4ftx4ftx3-1/2 5,000lb 20ft w/o Quick Connect NTEP III 5 Steel Painted
67699	Scale, Floor Roughdeck 4x4HP-10K 4ftx4ftx3-1/2 10,000lb 20ft w/o Quick Connect NTEP III 5 Steel Painted
67700	Scale, Floor Roughdeck 4X5HP-5K 4ftx5ftx3-1/2 5,000lb 20ft w/o Quick Connect NTEP III 5 Steel Painted
67701	Scale, Floor Roughdeck 4x5HP-10K 4ftx5ftx3-1/2 10,000lb 20ft w/o Quick Connect NTEP III 5 Steel Painted
67702	Scale, Floor Roughdeck 4x6HP-5K 4ftx6ftx3-1/2 5000lb 20ft w/o Quick Connect NTEP III 5 Steel Painted
67703	Scale, Floor Roughdeck 4x6HP-10K 4ftx6ftx3-1/2 10,000lb 20ft w/o Quick Connect NTEP III 5 Steel Painted
67704	Scale, Floor Roughdeck 5x5HP-5K 5ftx5ftx3-1/2 5000lb 20ft w/o Quick Connect NTEP III 5 Steel Painted
67705	Scale, Floor Roughdeck 5x5HP-10K 5ftx5ftx3-1/2 10,000lb 20ft w/o Quick Connect NTEP III 5 Steel Painted
67706	Scale, Floor Roughdeck 5x6HP-5K 5ftx6ftx3-1/2 5,000lb 20ft w/o Quick Connect NTEP III 5 Steel Painted
67707	Scale, Floor Roughdeck 5x6HP-10K 5ftx6ftx3-1/2 10,000lb 20ft w/o Quick Connect NTEP III 5 Steel Painted
67708	Scale, Floor Roughdeck 5x7HP-5K 5ftx7ft-3-1/2 5,000lb 20ft w/o Quick Connect NTEP III 5 Steel Painted
67709	Scale, Floor Roughdeck 5x7HP-10K 5ftx7ftx3-1/2 10,000lb 20ft w/o Quick Connect NTEP III 5 Steel Painted

Canadian Weights and Measures Approved - With Quick Connector

191928	Scale, Floor Roughdeck 2.5x2.5HC-1,000 2.5ftx2.5ft 1,000KG LMB Mild Steel Painted w/Quick Connect
191949	Scale, Floor Roughdeck 3x3HP-500 3ftx3ft 500KG LMB Mild Steel Painted w/ Quick Connect
191931	Scale, Floor Roughdeck 3x3HC-2,500 3ftx3ft 2,500KG LMB Mild Steel Painted w/ Quick Connect
191951	Scale, Floor Roughdeck 4x4HP-500 4ftx4ft 500KG LMB Mild Steel Painted w/ Quick Connect
191933	Scale, Floor Roughdeck 4x4HC-1,000 4ftx4ft 1,000KG LMB Mild Steel Painted w/ Quick Connect
191935	Scale, Floor Roughdeck 4x5HC-2,500 4ftx5ft 2,500KG LMB Mild Steel Painted w/ Quick Connect
191937	Scale, Floor Roughdeck 4x5HC-5,000 4ftx5ft 5,000KG LMB Mild Steel Painted w/ Quick Connect
191939	Scale, Floor Roughdeck 4x6HC-2,500 4ftx6ft 2,500KG LMB Mild Steel Painted w/ Quick Connect
191941	Scale, Floor Roughdeck 4x6HC-5,000 4ftx6ft 5,000KG LMB Mild Steel Painted w/ Quick Connect
191943	Scale, Floor Roughdeck 5x6HC-2,500 5ftx6ft 2,500KG LMB Mild Steel Painted w/ Quick Connect
191945	Scale, Floor Roughdeck 5x6HC-5,000 5ftx6ft 5,000KG LMB Mild Steel Painted w/ Quick Connect

Part # Description

66464	Scale,Floor Roughdeck 3x3HC-1,000 3ftx3ft 1,000KG LMB Mild Steel Painted w/ Quick Connect
66465	Scale,Floor Roughdeck 4x4HC-2,500 4ftx4ft 2,500KG LMB Mild Steel Painted w/ Quick Connect
66466	Scale,Floor Roughdeck 4x4HC-5,000 4ftx4ft 5,000KG LMB Mild Steel Painted w/ Quick Connect
66467	Scale,Floor Roughdeck 5x5HC-2,500 5ftx5ft 2,500KG LMB Mild Steel Painted w/ Quick Connect
66468	Scale,Floor Roughdeck 5x5HC-5,000 5ftx5ft 5,000KG LMB Mild Steel Painted w/ Quick Connect
66469	Scale,Floor Roughdeck 5x7HC-2,500 5ftx7ft 2,500KG LMB Mild Steel Painted w/ Quick Connect
66470	Scale,Floor Roughdeck 5x7HC-5,000 5ftx7ft 5,000KG LMB Mild Steel Painted w/ Quick Connect

Canadian Weights and Measures Approved - Without Quick Connector

191930	Scale,Floor Roughdeck 2.5x2.5HC-1,000 2.5ftx2.5ft 1,000KG LMB Mild Steel Painted w/o Quick Connect
191950	Scale,Floor Roughdeck 3x3HP-500KG 3ftx3ftx3-1/2 500KG LMB Mild Steel Painted w/o Quick Connect
191932	Scale,Floor Roughdeck 3x3HC-2,500KG 3ftx3ftx3-1/2 2,500KG LMB Mild Steel Painted w/o Quick Connect
191952	Scale,Floor Roughdeck 4x4HP-500KG 4ftx4ftx3-1/2 500KG LMB Mild Steel Painted w/o Quick Connect
191934	Scale,Floor Roughdeck 4x4HC-1,000KG 4ftx4ftx3-1/2 1,000KG LMB Mild Steel Painted w/o Quick Connect
191936	Scale,Floor Roughdeck 4x5HC-2500KG 4ftx5ftx3-1/2 2,500KG LMB Mild Steel Painted w/o Quick Connect
191938	Scale,Floor Roughdeck 4x5HC-5,000KG 4ftx5ftx3-1/2 5,000KG LMB Mild Steel Painted w/o Quick Connect
191940	Scale,Floor Roughdeck 4x6HC-2500KG 4ftx6ftx3-1/2 2,500KG LMB Mild Steel Painted w/o Quick Connect
191942	Scale,Floor Roughdeck 4x6HC-5,000KG 4ftx6ftx3-1/2 5,000KG LMB Mild Steel Painted w/o Quick Connect
191944	Scale,Floor Roughdeck 5x6HC-2,500KG 5ftx6ftx3-1/2 2,500KG LMB Mild Steel Painted w/o Quick Connect
191946	Scale,Floor Roughdeck 5x6HC-5,000KG 5ftx6ftx3-1/2 5,000KG LMB Mild Steel Painted w/o Quick Connect
67710	Scale,Floor Roughdeck 3x3HC-1,000KG 3ftx3ftx3-1/2 1,000KG LMB Mild Steel Painted w/o Quick Connect
67711	Scale,Floor Roughdeck 4x4HC-2500KG 4ftx4ftx3-1/2 2,500KG LMB Mild Steel Painted w/o Quick Connect
67712	Scale,Floor Roughdeck 4x4HC-5,000KG 4ftx4ftx3-1/2 5,000KG LMB Mild Steel Painted w/o Quick Connect
67713	Scale,Floor Roughdeck 5x5HC-2,500KG 5ftx5ftx3-1/2 2,500KG LMB Mild Steel Painted w/o Quick Connect
67714	Scale,Floor Roughdeck 5x5HC-5,000KG 5ftx5ftx3-1/2 5,000KG LMB Mild Steel Painted w/o Quick Connect
67715	Scale,Floor Roughdeck 5x7HC-2,500KG 5ftx7ftx3-1/2 2,500KG LMB Mild Steel Painted w/o Quick Connect
67716	Scale,Floor Roughdeck 5x7HC-5,000KG 5ftx7ftx3-1/2 5,000KG LMB Mild Steel Painted w/o Quick Connect

Options

Part #	Description
19352	Floor Stand,Indicator Steel Painted (36.3in) For 120/120 Plus, 882IS/882IS Plus, 882IS/882IS Plus w/battery, 880/880Plus, 480/480 Plus, 482/482 Plus, 680/682 Synergy, 380/380X Synergy, 381 Synergy
126384	Floor Stand,Indicator Steel Painted (48in.) For 120/120 Plus, 882IS/882IS Plus, 882IS/882IS Plus w/battery, 880/880 Plus, 480/480 Plus, 482/482 Plus, 680/682 Synergy, 380/380X Synergy, 381 Synergy
18777	Mounting Plate Set, Roughdeck 1,000-10,000 lb Steel Painted
Consult	Access ramps, pit frames, bumper guards and portability frames available
Consult	Smooth deck instead of diamond safety tread plate
Consult	Four drilled deck holes for scale height adjustment
Consult	Epoxy paint
Consult	Mild steel deck with RL32018S IP66 stainless steel cFMus approved load cells and hardware
Consult	Mild steel deck with RL32218S-HE hermetically sealed IP69K stainless steel cFMus approved load cells and hardware
Consult	Top access junction box
Consult	Forklift channel option (up to 5 ft x 7 ft 10,000 lb, accommodates fork tines no larger than (WxH) 5 in x 2 in, fork entry is an opposite side of junction box location)

Access Ramps

69040	Ramp,Roughdeck 2-1/2ft W x 3ft L x 3-1/2 1,000 - 10,000lb Steel Painted with side rails, diamond treadplate
69041	Ramp,Roughdeck 3ft W x 3ft L x 3-1/2 1,000 - 10,000lb Steel Painted with side rails, diamond treadplate
69042	Ramp,Roughdeck 4ft W x 3ft L x 3-1/2 1,000 - 10,000lb Steel Painted with side rails, diamond treadplate
69043	Ramp,Roughdeck 5ft W x 3ft L x 3-1/2 1,000 - 10,000lb Steel Painted with side rails, diamond treadplate
69184	Ramp,Roughdeck 2-1/2ftW x 4ftL x 3-1/2 1,000 - 10,000lb Steel Painted with side rails, diamond treadplate
69185	Ramp,Roughdeck 3ftW x 4ftL x 3-1/2 1,000 - 10,000lb Steel Painted with side rails, diamond treadplate
69186	Ramp,Roughdeck 4ftW x 4ftL x 3-1/2 1,000 - 10,000lb Steel Painted with side rails, diamond treadplate
69187	Ramp,Roughdeck 5ftW x 4ftL x 3-1/2 1,000 - 10,000lb Steel Painted with side rails, diamond treadplate

Pit Frames

18757	Pit Frame,Roughdeck 2-1/2 ftx2-1/2ft 1,000-10,00 lb Steel Painted
--------------	---

Part #	Description
18759	Pit Frame,Roughdeck 3ftx 3ft 1,000-10,000 lb Steel Painted
18761	Pit Frame,Roughdeck 4ftx 4ft 1,000-10,000 lb Steel Painted
18763	Pit Frame,Roughdeck 5ftx 5ft 1,000-10,000 lb Steel Painted
18765	Pit Frame,Roughdeck 4ftx 5ft 1,000-10,000 lb Steel Painted
18767	Pit Frame,Roughdeck 4ftx 6ft 1,000-10,000 lb Steel Painted
18769	Pit Frame,Roughdeck 5ftx 6ft 1,000-10,000 lb Steel Painted
18771	Pit Frame,Roughdeck 5ftx 7ft 1,000-10,000 lb Steel Painted

Bumper Guards - Option A

86815	Bumper Guard, Roughdeck HP 2.5ft long, OPT A, 10K or smaller, 3x3x1/4, 5/8 diameter holes
86816	Bumper Guard, Roughdeck HP 3ft long, OPT A, 10K or smaller, 3x3x1/4, 5/8 diameter holes
86817	Bumper Guard, Roughdeck HP 4ft long, OPT A, 10K or smaller, 3x3x1/4, 5/8 diameter holes
86818	Bumper Guard, Roughdeck HP 5ft long, OPT A, 10K or smaller, 3x3x1/4, 5/8 diameter holes
86819	Bumper Guard, Roughdeck HP 6ft long, OPT A, 10K or smaller, 3x3x1/4, 5/8 diameter holes
86820	Bumper Guard, Roughdeck HP 7ft long, OPT A, 10K or smaller, 3x3x1/4, 5/8 diameter holes
86821	Bumper Guard, Roughdeck HP 8ft long, OPT A, 10K or smaller, 3x3x1/4, 5/8 diameter holes
86822	Bumper Guard, Roughdeck HP 9ft long, OPT A, 10K or smaller, 3x3x1/4, 5/8 diameter holes
86823	Bumper Guard, Roughdeck HP 10ft long, OPT A, 10K or smaller, 3x3x1/4, 5/8 diameter holes

Bumper Guards - Option B

86843	Bumper Guard, Roughdeck HP 2.5ft long, OPT B, 10K or smaller, 3x3x1/4 Angle, 5/8 Diameter Holes
86844	Bumper Guard, Roughdeck HP 3ft long, OPT B, 10K or smaller, 3x3x1/4 Angle, 5/8 Diameter Holes
86845	Bumper Guard, Roughdeck HP 4ft long, OPT B, 10K or smaller, 3x3x1/4 Angle, 5/8 Diameter Holes
86846	Bumper Guard, Roughdeck HP 5ft long, OPT B, 10K or smaller, 3x3x1/4 Angle, 5/8 Diameter Holes
86847	Bumper Guard, Roughdeck HP 6ft long, OPT B, 10K or smaller, 3x3x1/4 Angle, 5/8 Diameter Holes
86848	Bumper Guard, Roughdeck HP 7ft long, OPT B, 10K or smaller, 3x3x1/4 Angle, 5/8 Diameter Holes
86849	Bumper Guard, Roughdeck HP 8ft long, OPT B, 10K or smaller, 3x3x1/4 Angle, 5/8 Diameter Holes
86850	Bumper Guard, Roughdeck HP 9ft long, OPT B, 10K or smaller, 3x3x1/4 Angle, 5/8 Diameter Holes

Part #	Description
---------------	--------------------

86851	Bumper Guard, Roughdeck HP 10ft long, OPT B, 10K or smaller, 3x3x1/4 Angle, 5/8 Diameter Holes
--------------	--

Bumper Guards - Option C

86870	Bumper Guard, Roughdeck HP 2.5ft long, OPT C, 10K or smaller, 3x3x1/4 Angle, 5/8 Diameter Holes
--------------	---

86871	Bumper Guard, Roughdeck HP 3ft long, OPT C, 10K or smaller, 3x3x1/4 Angle, 5/8 Diameter Holes
--------------	---

86872	Bumper Guard, Roughdeck HP 4ft long, OPT C, 10K or smaller, 3x3x1/4 Angle, 5/8 Diameter Holes
--------------	---

86873	Bumper Guard, Roughdeck HP 5ft long, OPT C, 10K or smaller, 3x3x1/4 Angle, 5/8 Diameter Holes
--------------	---

86874	Bumper Guard, Roughdeck HP 6ft long, OPT C, 10K or smaller, 3x3x1/4 Angle, 5/8 Diameter Holes
--------------	---

86875	Bumper Guard, Roughdeck HP 7ft long, OPT C, 10K or smaller, 3x3x1/4 Angle, 5/8 Diameter Holes
--------------	---

86876	Bumper Guard, Roughdeck HP 8ft long, OPT C, 10K or smaller, 3x3x1/4 Angle, 5/8 Diameter Holes
--------------	---

86877	Bumper Guard, Roughdeck HP 9ft long, OPT C, 10K or smaller, 3x3x1/4 Angle, 5/8 Diameter Holes
--------------	---

86878	Bumper Guard, Roughdeck HP 10ft long, OPT C, 10K or smaller, 3x3x1/4 Angle, 5/8 Diameter Holes
--------------	--

Replacement Parts

Part #	Description
88956	J-Box,JB4SS 4 Channel Signal Trim with Expansion, w/PG 7 cord grips for load cells, Stainless Steel Nema 4X FM Approved
91895	Cable ASSY,Mini Conx Fem W/ 17 Inch EL146HE Survivor Cable 6 Socket
66454	Cord Grip,Snap inStraight .360-.430 Cord Dia. .750 Dia. Hole Black Nylon
15611	Cable Assy,6 Conductor 20ft Long, EL147HE, Used On Roughdeck
53640	Cable ASSY,Mini Conx M w/ 20' EL146HE Survivor Cable
92437	Coverplate,J-Box for side access floor scales, painted black.
14877	Screw,Machine 10-32NF x 3/8 Slotted Drilled Fillister Head 18-8 SST
15658	Mount,Cable Tie 1in Square Nylon
15631	Cable Tie,3in Nylon
15071	Screw,Cap 1/2-20NF x 1.939 Hex Head Zinc Plated Steel Tolerances Length= +0/-0.031
40337	Screw,Cap 3/4-16NF x 2-1/4 Hex Head Fully Threaded Grade 5 Steel Zinc Plated
18756	Foot,Floor Scale SUREFOOT 1/2-20NFx3.47DIAx2.62 SST stem and Neoprene Rubber bottom
39021	Foot ASSY,20k Floor Scale
39022	Foot ASSY,30k Floor Scale
189152	Load Cell,SEB RL32018- 1000lb 20ft 3mv/v 350 Ohm NTEP III 5M Alloy FM WW IP66
189154	Load Cell,SEB RL32018- 2500lb 20ft 3mv/v 350 Ohm NTEP III 5M Alloy FM WW IP66
189156	Load Cell,SEB RL32018- 4000lb 20ft 3mv/v 350 Ohm NTEP III 5M Alloy FM WW IP66
189159	Load Cell,SEB RL32018- 10000lb 20ft 3mv/v 350 Ohm NTEP III 5M Alloy FM WW IP66
18777	Mounting Plate Set, Roughdeck 1,000-10,000 lb Steel Painted
40387	Mounting Plate Set, ROUGHDECK 20,000lb Steel Painted
40388	Mounting Plate Set, ROUGHDECK 30,000lb Steel Painted
15051	Screw, Set 1/2-20NF x 3/4 Hex Socket Cup Point Alloy Steel Black Oxide
15410	Level,Spirit Bubble Plastic 15mm Press Fit

Part #	Description
---------------	--------------------

14957	Screw,Cap 1/4-20NC x 1/2 Hex Socket Flat Countersunk Head Alloy Steel Black Oxide
--------------	---

15022	Screw,Cap 3/8-16NC x 1 Hex Socket Flat Countersunk Head Alloy Steel Black Oxide
--------------	---

www.ricelake.com | 800-472-6703

An ISO 9001 Registered Company ©2024 Rice Lake Weighing Systems