

ELS Series Elevated Load Cell Stands



Standard Features

- Adjustable height and width in 1-inch increments
- Mild or stainless steel frame
- Individual load cell overload protection
- Jack bolts in leveling feet for easy conveyor height alignment
- Kit includes: two stands, load cells, junction box, two adjustable stabilizing braces, leveling shims and hardware

Options

- Mild or stainless steel indicator stand
- Additional single ELS weigh stand
- Additional stabilizing brace kit

*Rollers and conveyors are not included and are from other manufacturers

Load Cell Stands

Rice Lake Weighing Systems' ELS Series elevated load cell stands are made to replace existing legs on a conveyor to convert it into a scale. ELS Series weigh stands are a low-cost, flexible solution for all of your conveyor weighing needs. The weigh stands can be integrated into any pre-existing system to fit the exact height and width of your conveyor. This simplistic design is adaptable to a wide range of conveyor manufacturers.

Built Tough

Rice Lake's ELS Series weigh stands are made of powder-coated mild steel that is built strong and flexible to fit a variety of weighing needs. The 2-part ELS Series weigh stands are available in 250-, 500- and a 1,000-pound capacity.

Ease of Installation

The ELS Series is designed for its ease of installation and flexibility. The height and width are fully adjustable to fit your facility. With jack bolts and shims on the leveling feet, you can easily match your existing conveyor height.

ELS Elevated Load Cell Stands Specifications

Load Cell:

Four RL32018 or RL32018S single-ended beam: 250 lb, 500 lb and 1,000 lb capacity

Cable Length:

25 ft

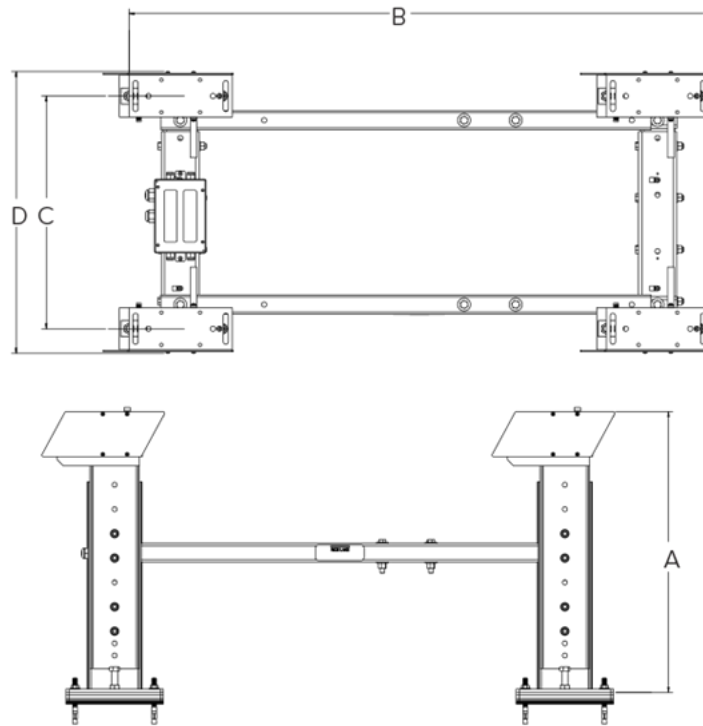
Approvals:

Load cells are FM approved

Warranty:

Two-year limited

ELS Elevated Load Cell Stand Dimensions



Reference	Kit Variation	Minimum Dimension	Maximum Dimension
A	Small	22 in (55.88 cm)	28 in (71.12 cm)
	Large	29 in (73.66 cm)	36 in (91.44 cm)
B	All	30 in (76.20 cm)	60 in (152.40 cm)
C	Small	17 in (43.18 cm)	24 in (60.96 cm)
	Medium	25 in (63.50 cm)	36 in (91.44 cm)
	Large	37 in (93.98 cm)	54 in (137.16 cm)
D	Small	22 in (55.88 cm)	28 in (71.12 cm)
	Medium	29 in (73.66 cm)	40 in (101.60 cm)
	Large	41 in (104.14 cm)	58 in (147.32 cm)

Options

Part #	Description
19352	Floor Stand,Indicator Steel Painted (36.3in) For 120/120 Plus, 882IS/882IS Plus, 882IS/882IS Plus w/battery, 880/880Plus, 480/480 Plus, 482/482 Plus, 680/682 Synergy, 380/380X Synergy, 381 Sy
28740	Floor Stand,Indicator SST (36.3in) For 120/120 Plus, 882IS/882IS Plus, 882IS/882IS Plus w/battery, 880/880 Plus, 480/480 Plus, 482/482 Plus, 680/682 Synergy, 380/380X Synergy
213229	Bracing Kit Includes: 2 Inner Tubes, 2 Outer Tubes & Hardware
213316	Bracing Kit, SST Includes: 2 Inner Tubes, 2 Outer Tubes & Hardware
Consult	Single ELS weigh stand

www.ricelake.com | 800-472-6703

An ISO 9001 Registered Company ©2024 Rice Lake Weighing Systems