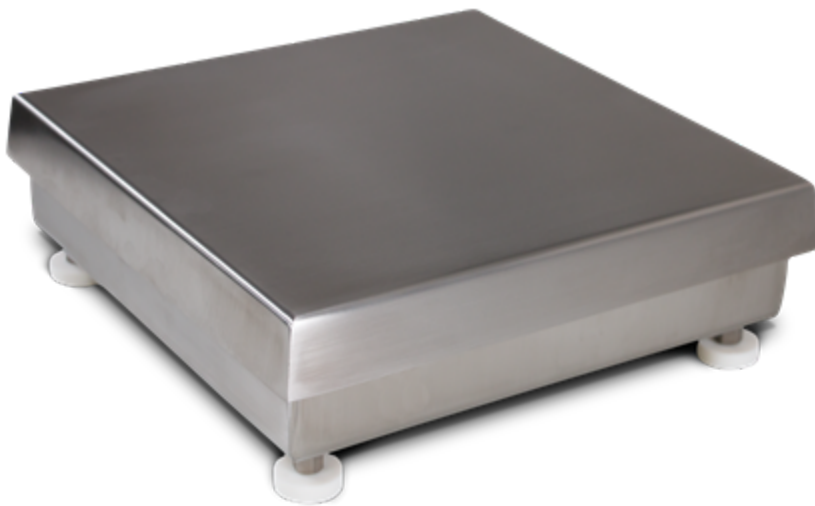


CW-90B Light-capacity Bench Scale



As of: Friday, February 14,
2025



Standard Features

- IP67 aluminum environmentally sealed load cell
- 304 stainless steel construction
- Meets HACCP requirements
- Five-point overload protection
- Specially designed adjustable support feet provide exceptional traction and will not scratch surfaces

Approvals



Measurement
Canada
Approved





WARNING:
Cancer
and
Reproductive
Harm
California
Proposition
65

Durable, General Purpose Bench Scale

The CW-90B is a light-capacity industrial bench scale base designed to endure tough environments with a full 304 stainless steel construction and aluminum environmentally sealed load cell. Available in a range of low- to mid-size dimensions and capacities up to 100 pounds, Rice Lake has the appropriate size for your application.

CW-90B Bench Scale Specifications

Load Cell, NTEP Certified:

IP67 aluminum, environmentally sealed

Scale Frame:

AISI304L, straight line finish, Ra=45 ± 10

Temperature:

Compensated: 14 °F to 104 °F (-10 °C to 40 °C)

Output Impedance:

350 ohm

Scale Cover:

AISI304L, straight line finish, Ra=45 ± 10

Warranty:

Two-year limited

Maximum Overload:

180% to 200% depending on capacity

Cable Length:

34 in or 10 ft

Approvals:

NTEP 95-072, Class III 5,000 d Measurement Canada AM-5082

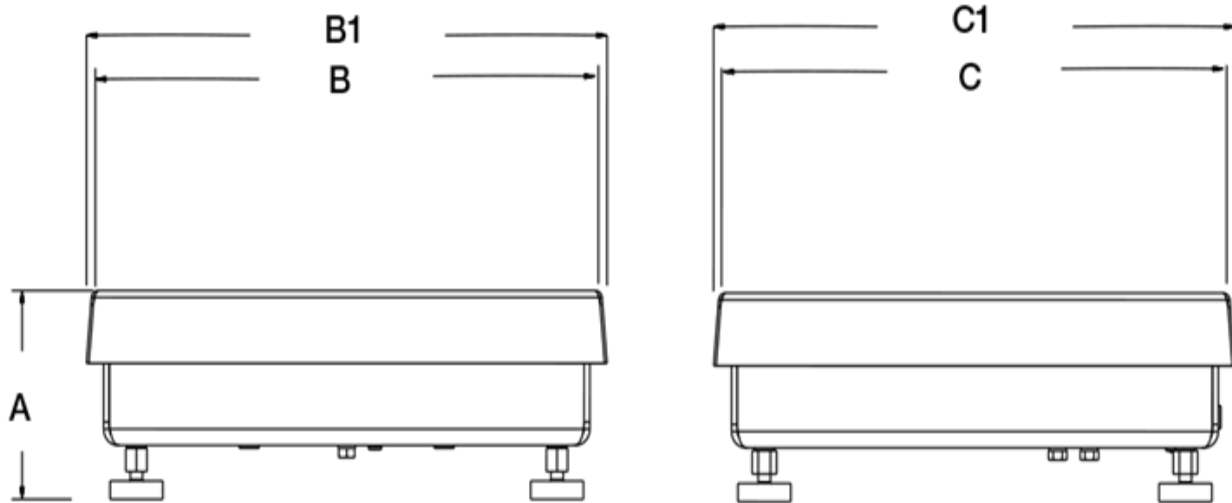
NSF

Load cell is cFMus Approved

Overload Protection:

Five-point, independently adjusted

CW-90B Bench Scale Dimensions



10 × 10 Dimensions			
A	4.25 in	C	10.00 in
B	10.00 in	C1	10.25 in
B1	10.25 in		
12 × 12 Dimensions			
A	4.25 in	C	12.00 in
B	12.00 in	C1	12.25 in
B1	12.25 in		

Parts

Part #	Description
--------	-------------

Cable length: 10 ft

112599	Bench Scale ASSY,5lb CW90 10x10 (Load Cell Cable Length Is 10ft)
112601	Bench Scale ASSY,10lb CW90 10x10 (Load Cell Cable Length Is 10ft)
112603	Bench Scale ASSY,25lb CW90 10x10 (Load Cell Cable Length Is 10ft)
112605	Bench Scale ASSY,25lb CW90 12x12 (Load Cell Cable Length Is 10ft)
112607	Bench Scale ASSY,50lb CW90 12x12 (Load Cell Cable Length Is 10ft)
112609	Bench Scale ASSY,100lb CW90 12x12 (Load Cell Cable Length Is 10ft)

Cable length: 34 in

106137	Bench Scale ASSY,5lb CW90 10x10 (LOAD CELL CABLE LENGTH IS 34 IN.)
106138	Bench Scale ASSY,10lb CW90 10x10 (LOAD CELL CABLE LENGTH IS 34 IN.)
106139	Bench Scale ASSY,25lb CW90 10x10 (LOAD CELL CABLE LENGTH IS 34 IN.)
106140	Bench Scale ASSY,25lb CW90 12X12 (LOAD CELL CABLE LENGTH IS 34 IN.)
106141	Bench Scale ASSY,50lb CW90 12X12 (LOAD CELL CABLE LENGTH IS 34 IN.)
106142	Bench Scale ASSY,100lb CW90 12X12 (Load Cell Cable Length Is 34 In.)

Options

Part #	Description
112044	Column,12 Inch SST Kit OPT Benchmark, Benchmark (SL/HE/HE-X), CW-80B, CW-90B, CW-90XB to IQ+210, CW-90I, CW-90XI, 480/482, 680/682, 380/380X
112045	Column,18 Inch SST Kit OPT Benchmark, Benchmark (SL/HE/HE-X), CW-80B, CW-90B, CW-90XB to IQ+210, CW-90I, CW-90XI,480/482, 680/682, 380/380X
196363	Column,12 Inch SST Kit OPT Benchmark, Benchmark (SL/HE), CW-80B, CW-90B, CW-90XB to 882IS/882IS PLUS with battery
196364	Column,18 Inch SST Kit OPT Benchmark, Benchmark (SL/HE), CW-80B, CW-90B, CW-90XB to 882IS/882IS PLUS with battery
197482	Column,12 Inch SST Kit OPT Benchmark, Benchmark (SL/HE), CW-80B, CW-90B, CW-90XB to 882IS/882IS PLUS with power supply option (power supply will not be mounted to the column), 880/880 Plus Universal
197484	Column,18 Inch SST Kit OPT Benchmark, Benchmark (SL/HE), CW-80B, CW-90B, CW-90XB to 882IS/882IS PLUS with power supply (power supply will not be mounted to the column), 880/880 Plus Universal
64576	Bracket,Attachment Kit OPT, Benchmark for IQ+210, 480/482, 680/682, 380/380X
NA	Ball transfer and roller conveyor top

Replacement Parts

Part # Description

Cable length: 10 ft

32860 Load Cell,SPT RL1040-N5- 7kg 7kg 10ft 2mV/V 350 OHM NTEP III 5 S AL Potted FM IP67

32861 Load Cell,SPT RL1040-N5- 10kg 10kg 10ft 2mV/V 350 OHM NTEP III 5 S Al Potted FM IP67

32865 Load Cell,SPT RL1040-N5- 50kg 50kg 10ft 2mV/V 350 OHM NTEP III 5 S Al Potted FM IP67

32866 Load Cell,SPT RL1040-N5- 100kg 100kg 10ft 2mV/V 350 OHM NTEP III 5 S Al Potted FM IP67

107476 Foot,Benchmark 1/4-20NCx 1-1/2 SST USDA/NSF Approved CW90/CW90X

105555 Nut,CPLG 1/4-20NC x .400 3/8 Hex With .265 Counterbore SST

Cable length: 34 in

107756 Load Cell,SPT RL1040-7KG 2.83ft 2mv/v 350 OHM NTEP III 5 S AL Potted FM CE Cable Stripped And Tinned

107757 Load Cell,SPT RL1040-10kg 2.83ft 2mv/v 350 OHM NTEP III 5 S AL Potted FM CE Cable Stripped And Tinned

107758 Load Cell,SPT RL1040-30KG 2.83ft 2mv/v 350 OHM NTEP III 5 S AL Potted FM CE Cable Stripped And Tinned

107759 Load Cell,SPT RL1040-50KG 2.83ft 2mv/v 350 OHM NTEP III 5 S AL Potted FM CE Cable Stripped And Tinned

107760 Load Cell,SPT RL1040- 100KG 2.83ft 2mv/v 350 OHM NTEP III 5 S AL Potted FM CE Cable Stripped And Tinned

www.ricelake.com | 800-472-6703

An ISO 9001 Registered Company ©2024 Rice Lake Weighing Systems